

UNORTHODOX OPENINGS NEWSLETTER

UON # **15**

May – Aug
2006

“Dedicated to gambiteers and
players of the unorthodox.”



Special Edition: Clyde Nakamura's

CHESS BATTLEFRONTS

Senior Editor Gary K. Gifford



Chess Battlefront

This *Chess Battlefronts* edition of UON has many opening ideas that I've not laid eyes on before. There is a nice assortment of strategies and tactics, as you will soon see.

Several articles that were originally anticipated for this issue are, at present, only partially edited and there remains a need for many chess diagrams to be created and added. I believe it will be worth the additional wait, i.e., to see these articles in UON 16. An unacceptable option was to do a relatively hurried job to get all that planned content in this issue by sacrificing in the areas of: diagrams, editing, graphics, and other aesthetics.

As for UON 15, I think it stands well on its own as a thought provoking and rather unique issue. Though it is not big in page count, I believe it makes a nice addition to anyone's chess library and that Clyde Nakamura has made another meaningful contribution to the world of unorthodox chess openings.

For contributors who had looked forward to seeing their material in this issue (including me), I do apologize for any disappointment you may have.

Great chess to all,
Sincerely,

Gary K. Gifford
UON Senior Editor
penswift@yahoo.com

Feel free to send games, comments, and articles to: *penswift@yahoo.com*

CHESSE BATTLEFRONT

#1

by Clyde Nakamura

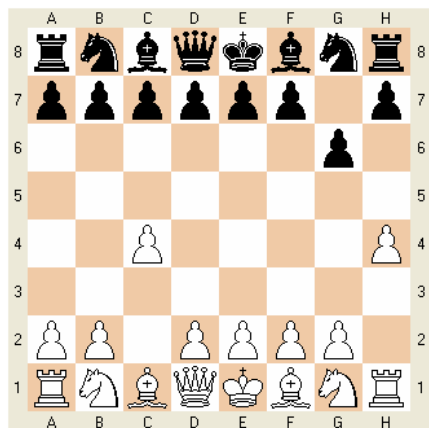


For me, chess has been a real battle. Below are my recent chess battles on Playchess.com. These are mainly the English and Queen Pawn Openings. I have posted these games in a file called cbfront1.pgn in the files section for your viewing pleasure.

Best Regards
Clyde Nakamura

ENGLISH OPENING

1.c4 g6 2.h4 (no name for this one) - 2 games



Evilone (1916) - Maugab73 (1909) Playchess.com 2/18/06 Gm 5 min.

1. c4 g6 2. h4 h5 3. d4 Bg7 4. Nc3 d6 5. e4 c5 6. dxc5 Bxc3+ 7. bxc3 Qa5 8. Nf3 Qxc3+ 9. Bd2 Qg7 10. cxd6 exd6 11. Rc1 Bg4 12. Bc3 Nf6 13. Qxd6 Nbd7 14. Ne5 O-O-O 15. Nc6 {! a very strong

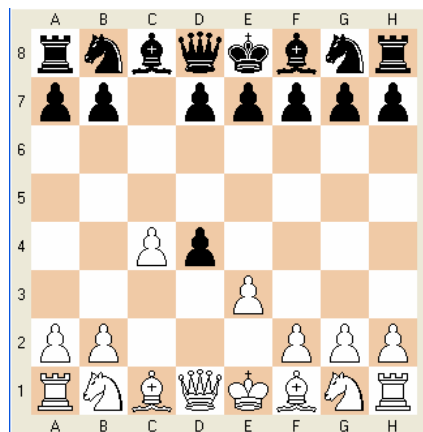
move it wins. It threatens mate with Nxa7+ or Ne7+. I black captures the N he gets mated with 15...bxc6 16.Qxd6 Kb8 17.Rb1+ Nb6 18.Be5+ Rd6 19.Bxd6+mate.} bxc6 16. Qxc6+ Kb8 17. Rb1+ {a beautiful game} 1-0

Evilone (1903) - Modernd (1953) Playchess.com 2/18/06 Gm 5 min.

1. c4 g6 2. h4 Nf6 3. Nc3 e5 4. Nf3 Nc6 5. d4 exd4 6. Nxd4 Bg7 7. Bg5 h6 8. Nxc6 bxc6 9. Bf4 O-O 10. Qd2 Kh7 11. O-O-O d6 12. e4 Qe7 13. f3 Rd8 14. g4 Nd7 15. g5 h5 16. Be3 Ne5 17. f4 Ng4 18. Bd4 Bxd4 19. Qxd4 Be6 20. Be2 c5 21. Qg1 c6 22. Rf1 Qd7 23. f5 gxf5 24. Bxg4 fxe4 25. Rf6 Bxc4 26. Qf2 Kg7 27. b3 Be6 28. Rf1 d5 29. e5 Qe7 30. Qc2 Rh8 31. g6 Rh6 32. gxf7 Rf8 33. Qd2 Bxf7 34. Qxh6+ Kg8 35. e6 1-0

LIEDMANN GAMBIT

1.c4 c5 2.d4 cxd4 3.e3 - 2 games



Evilone (1902) - Cjrlee (1831) Playchess.com 2/18/06 Gm 5 min

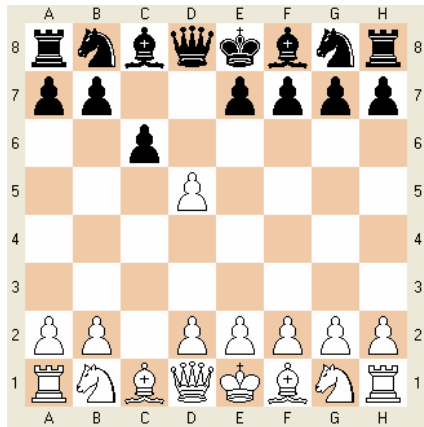
1. c4 c5 2. d4 cxd4 3. e3 dxe3 4. Bxe3 Nf6 5. Nc3 Nc6 6. Nf3 e6 7. Qd2 a6 8. Bd3 Be7 9. O-O O-O 10. h3 d5 11. cxd5 exd5 12. Rad1 Kh8 13. Bg5 Be6 14. Rfe1 Nb4 15. Bb1 b5 16. a3 Nc6 17. Nd4 Nxd4 18. Qxd4 Rc8 19. Qd3 g6 20. Bh6 Re8 21. Qg3 Kg8 22. Ne2 Rc4 23. Nd4 Nh5 24. Qf3 Bf6 25. Nxe6 fxe6 26. g4 Ng7 27. Ba2 Rd4 28.

Bxg7 Bxg7 29. b4 Rf8 30. Qe2 Re4
 31. Qxe4 dxe4 32. Rxd8 Rxd8 33.
 Bxe6+ Kf8 34. Rxe4 Bb2 35. Rf4+
 Ke7 36. Ba2 Bxa3 37. Rf7+ Kd6
 38. Rxh7 Bxb4 39. Rg7 Ke5 40.
 Rxc6 Rd1+ 41. Kg2 a5 42. Rb6 Rd2
 43. Rxb5+ Kf6 44. Bc4 Rc2 45.
 Bd5 Be1 46. g5+ Kg7 47. Rb7+ Kf8
 48. Rf7+ Ke8 49. g6 Bc3 50. g7
 Bxg7 51. Rxc6 a4 52. Ra7 Rc5 53.
 Bf3 Rc4 54. Rxa4 Rxa4 55. Bc6+
 Ke7 56. Bxa4 Kf6 57. f4 Kg6 58.
 Kg3 Kf5 59. Kf3 Kg6 60. Kg4 Kh6
 61. h4 Kg7 62. h5 1-0

Evilone (1910) - Aglio03 (1951)
Playchess.com 2/19/06 Gm 5 min.
 1. c4 c5 2. d4 cxd4 3. e3 dxe3
 4. Bxe3 Nf6 5. Nc3 d6 6. Bd3 e6
 7. Nf3 Be7 8. O-O Nbd7 9. h3 O-O
 10. Qe2 Qc7 11. Rac1 a6 12. Rfd1
 Nc5 13. Bb1 b6 14. b4 Ncd7 15.
 Ne4 Bb7 16. Nxf6+ Nxf6 17. c5
 dxc5 18. bxc5 bxc5 19. Bg5 Rac8
 20. Ne5 Rfd8 21. f4 Rxd1+ 22.
 Rxd1 c4 23. Bxf6 Bxf6 24. Rd7
 Qc5+ 25. Kh1 Qb5 26. Bxh7+ Kh8
 27. Qh5 1-0

VECTOR GAMBIT

1.c4 d5 2.cxd5 c6 - 2 games



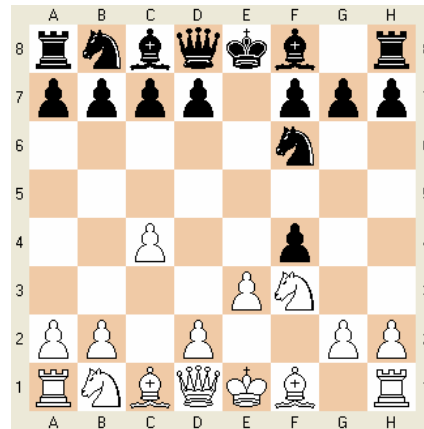
Pachec - Evilone Playchess.com
2/5/06 Game 5 min.
 1. c4 d5 2. cxd5 c6 3. dxc6 Nxc6
 4. Nf3 e5 5. d3 Nf6 6. Nc3 Bc5
 7. e30-O 8. Be2 h6 9. O-O Qe7
 10. a3 a5 11. Qc2 Be6 12. Ne4

Nxe4 13. dxe4 Rac8 14. Bd2 f5 15.
 exf5 Bxf5 16. e4 Nd4 17. Bc4+
 Kh8 18. exf5 Nxf3+19. gxf3 Bd4
 20. Qd3 Rc6 21. Bd5 Rd6 22. Qc4
 Rxf5 23. Be3 Bxe3 24.fxe3 Rg5+
 25. Kh1 Qd7 26. Be4 Rd2 27. Rg1
 Qh3 0-1

Cjrlee (1864) - Evilone (1886)
Playchess.com 2/18/06 Gm 5 min.
 1. c4 d5 2. cxd5 c6 3. dxc6 Nxc6
 4. Nf3 e5 5. d3 Nf6 6. Bg5 Bc5
 7.Bxf6 Qxf6 8. Nc3 Qe7 9. a3 Be6
 10. e3 a5 11. Be2 f5 12. O-O O-O
 13.Re1 Rad8 14. Rc1 e4 15. Nd4
 Nxd4 16. exd4 Bxd4 17. Bf1 Qh4
 18. g3Bxf2+ 19. Kxf2 Qxh2+ 20.
 Bg2 f4 21. g4 f3 22. Nxe4 fxc2+
 23. Ke3 Qh3+24. Kd2 Rxd3+ 25.
 Kc2 Rxd1 26. Rcxdl Bb3+ 27. Kcl
 Bxd1 28. Rxd1 Qe3+ 0-1

Kahiko-Hula Gambit

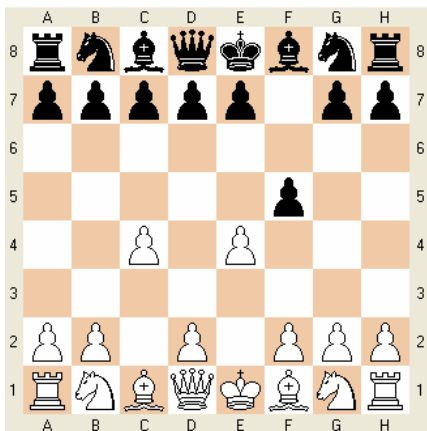
1.c4 e5 2.e3 Nf6 3.f4 exf4 4.Nf3



Evilone (1837) - Holdi (1921)
Playchess.com 1/29/06 Gm 5m + 3s
 1. c4 e5 2. e3 Nf6 3. f4 exf4 4.
 Nf3 fxe3 5. Bd3 d5 6. O-O exd2
 7.Bxd2 Bc5+ 8. Kh1 O-O 9. Nc3
 dxc4 10. Bxc4 Bg4 11. h3 Bh5 12.
 Qc2 Bg613. Qb3 Nh5 14. Be1 Nc6
 15. Rd1 Qc8 16. Nh4 Ne5 17. Nxc6
 hxg6 18. Rd5 Bd6 19. Ne4 Nxc4
 20. Qxc4 Qe6 21. Ng5 Qe7 22. Qh4
 c6 23. Rd4 Rae8 24. Re4 Qc7 25.
 g4 Rxe4 26. Nxe4 Nf4 27. Ng5 Nh5
 28. gxh5 Re8 29. hxg6 1-0

HICKMANN GAMBIT

1. c4 f5 2.e4

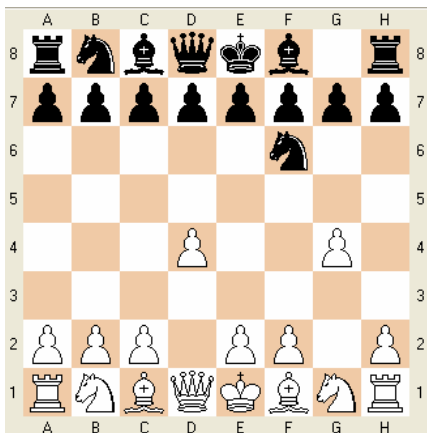


Evilone(1801) - DanishDynamite(1855)
Playchess.com 2/5/06 Game 5min.

1. c4 f5 2. e4 fxe4 3. f3 exf3
 4. Nxf3 Nf6 5. d4 e6 6. Bd3 Bb4+
 7. Nc3 O-O 8. O-O Nc6 9. Bg5 Be7
 10. Qe1 b6 11. Qh4 h6 12. Bxh6
 gxh6 13. Qxh6 Rf7 14. Ng5 Rg7
 15. Rxf6 Bxf6 16. Bh7+ Kf8 17.
 Rf1 Ke7 18. Qxf6+ Kd6 19. Nge4#
 1-0

QUEEN PAWN GIBBINS-WEIDENHAGEN GAMBIT

1.d4 Nf6 2.g4



Evilone (1929)-Bkatz (1999)
Playchess.com 5/8/05 Game 5min.

1. d4 Nf6 2. g4 d5 3. g5 Ne4 4.
 f3 Nd6 5. Nc3 c6 6. e4 dxe4 7.
 fxe4 e6 8. Be3 Be7 9. Qd2 h6 10.
 Nf3 hxg5 11. Nxc6 Nd7 12. O-O-O
 Nb6 13. b3 Bd7 14. Bd3 Qc7 15.
 Rdf1 f6 16. e5 Nf5 17. Bxf5 exf5
 18. e6 Bc8 19. Rxf5 fxc5 20.
 Bxc5 Bxe6 21. Re5 Qd7 22. Rh1
 O-O-O 23. Rxe6 Bxc5 24. Qxc5
 Qxd4 25. Qe5 Qxe5 26. R1xe5 Rxh2
 27. Re7 g6 28. Ne4 Rh1+ 29. Kb2
 Nd5 30. Rg7 Nb4 31. a3 Nd5 32.
 Rxc6 Rh2 33. Nc3 Nf4 34. Reg5
 Nxc6 35. Rxc6 Rdd2 36. b4 Rxc2+
 37. Kb3 b5 38. a4 Rb2+ 39. Ka3
 Rxc2 40. Rxc6+ Kd7 41. axb5 Rg2
 42. Ra6 Rbc2 43. Kb3 Rcd2 44.
 Rxa7+ Ke6 45. b6 Rg3 46. Rc7
 Rdd3 47. b7 Kd6 48. Rc4 (48.
 b8=Q {I should have played this
 move. Yes this wins easily.})
 48... Rxc3+ 49. Rxc3 Rxc3+ 50.
 Kxc3 Kc7 51. Kc4 1-0

**Evilone (1887)-Alcaravaneras
 (1972) Playchess.com 8/18/05
 Game 5min.**

1. d4 Nf6 2. g4 Nxc4 3. e4 Nf6
 4. e5 Nd5 5. c4 Nb6 6. Nc3 d6 7.
 f4 dxe5 8. fxe5 Bf5 9. a3 e6 10.
 Be3 c5 11. d5 N8d7 12. Nf3 Bg4
 13. Bf4 Be7 14. Bg2 Bxf3 15.
 Qxf3 Bh4+ 16. Bg3 Qg5 17. O-O O-
 O 18. Ne4 Qh6 19. d6 Bxc3 20.
 Qxc3 Kh8 21. b3 f5 22. exf6 Nxf6
 23. Ng5 Nh5 24. Qh4 Rf5
 (24... Qg6 {Black should have
 played this move. What he played
 loses the Q.}) 25. Rxf5 exf5 26.
 Nf7+ 1-0

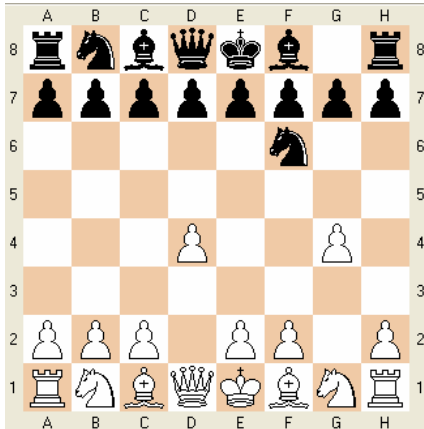
Evilone (1972)-Joe24 (1897)
Playchess.com 8/20/05 Game 5min.

1. d4 Nf6 2. g4 g6 3. g5 Nh5 4.
 e4 Ng7 5. Nc3 b6 6. Bg2 Bb7 7.
 Nge2 Nc6 8. Be3 e6 9. a3 Nh5 10.
 Qd2 Be7 11. O-O-O Na5 12. Qd3
 Rc8 13. f4 c5 14. d5 e5 15. h4
 exf4 16. Nxf4 Nxf4 17. Bxf4 c4
 18. Qd4 Rg8 19. d6 Nc6 20. Qe3
 Bf8 21. Nd5 Bg7 22. Nc7+ Kf8 23.

h5 Be5 24. hxg6 hxg6 25.
Rh7 Bg7 26. Qh3 Ne5 27. Rxc7
Rxc7 28. Qh8+ Rg8 29. Qxe5 (29.
Qh6+ Rg7 30. Bxe5 {This was
better than what I had played.})
29... Bc6 30. Rh1 1-0

OMEGA GAMBIT

1.d4 Nf6 2.e4



**Evilone (1911)- Mercedes Slk
(1914) Playchess.com 2/18/06
Game 5min.**

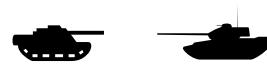
1. d4 Nf6 2. e4 Nxe4 3. Nc3 Nxc3
4. bxc3 d5 5. Bd3 Nd7 6. Nf3 Nf6
7. Bg5 e6 8. O-O Be7 9. Ne5 O-O
10. f4 h6 11. Bxh6 gxh6 12. Rf3
Ne4 13. Rh3 1-0

**Evilone (1808)-Adwang (1835)
Playchess.com 9/4/05 Game 5min.**

1. d4 Nf6 2. e4 Nxe4 3. Nc3 Nxc3
4. bxc3 d5 5. Bd3 c5 6. Nf3 c4
7. Be2 Bf5 8. Ne5 e6 9. Bg4 Bg6
10. O-O Bd6 11. f4 Nd7 12. Qe1
Bxc2 13. Nxf7 Qe7 14. Nxf8 O-O-O
15. Bxe6 Rxh8 16. Bxd5 Qf6 17.
Bd2 Bd3 18. Rf2 Rf8 19. Qc1 Nb6
20. Bf3 Kb8 21. a4 h6 22. a5 Nd7
23. Qb2 b5 24. axb6 axb6 25.
Ra8+ Kc7 26. Ra7+ Kd8 27. Qa2
Bxf4 28. Bg4 Bxh2+ 29. Kxh2 Qxf2
30. Rxd7+ Ke8 31. Qa8# 1-0

CHESS BATTLEFRONT #2

by Clyde Nakamura



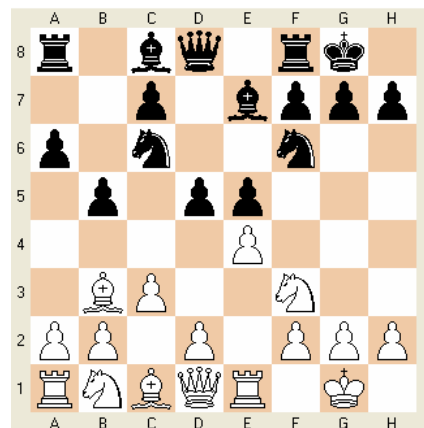
This is a continuation from
Chess Battlefront #1. These are
my recent chess games on
Playchess.com with King Pawn and
other openings. I have posted a
file called cbfront2.pgn in
the files section.

Best Regards
Clyde Nakamura

KING PAWN OPENINGS

MARSHALL GAMBIT

1. e4 e5 2. Nf3 Nc6 3. Bb5 a6
4. Ba4 Nf6 5. O-O b5 6. Bb3
Be7 7. Re1 O-O 8. c3 d5 (dia.)



**Jani60 (1945)-Evilone (1910)
Playchess.com 2/18/06 5 min.**
1. e4 e5 2. Nf3 Nc6 3. Bb5 a6
4. Ba4 Nf6 5. O-O b5 6. Bb3
Be7 7. Re1 O-O 8. c3 d5
9. exd5 Nxd5 10. Nxe5 Nxe5
11. Rxe5 c6 12. d4 Bd6

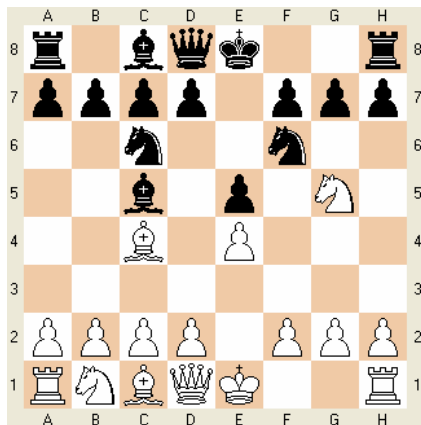
13. Re1 Qh4 14. g3 Qh3 15.
Be3 f5 16. f4 g5 17. Qf3 Be6
18. Nd2 Rae8 19. fxf5 f4 20.
Bf2 fxf3 21. Qxf8+ Rxf8 22.
hxf3 Rxf2 0-1

**Das Faultier (1902)-Evilone
(1929) Playchess.com 2/18/06
Game 5min.**

1. e4 e5 2. Nf3 Nc6 3. Bb5 a6
4. Ba4 Nf6 5. O-O b5 6. Bb3
Be7 7. Re1 O-O 8. h3 d5 9.
exd5 Nxd5 10. Nxe5 Nxe5 11.
Rxe5 c6 12. Bxd5 cxd5 13.
d4 Bd6 14. Re1 Qh4 15. c3
Bxh3 16. gxh3 Qxh3 17. Be3 f5
18. Qe2 Rf6 19. Qf1 Rg6+ 0-1

TRAXLER GAMBIT

1.e4 e5 2.Nf3 Nc6 3.Bc4 Nf6
4. Ng5 Bc5



**Mothomas (1904)-Evilone
(1913) Playchess.com 2/12/06
Game 5min.**

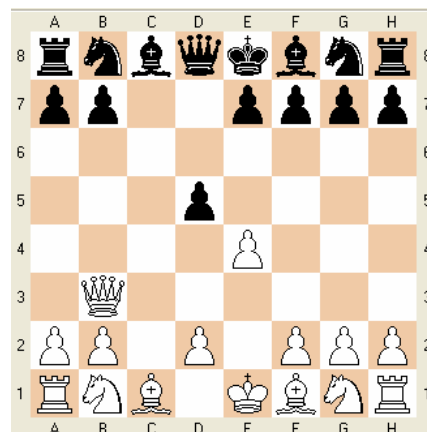
1. e4 e5 2. Nf3 Nc6 3. Bc4
Nf6 4. Ng5 Bc5 5. Bxf7+ Ke7
6. Bd5 d6 7. O-O Bg4 8. Nf3
Nd4 9. c3 Nxf3+ 10. gxf3 Bh3
11. d4 exd4 12. cxd4 Bb6
13. Re1 c6 14. Bb3 Kd7 15.
Bg5 Qe8 16. e5 Qg6 17. f4 h6
18. Bc2 Bf5 19. Bxf5+ Qxf5
20. Bh4 Nd5 21. Nc3 Nxf4 22.
Bg3 g5 23. e6+ Ke7 24. Qf3
h5 25. Ne4 Raf8 26. h4 Nh3+
0-1

**Cross (1842)-Evilone (1946)
Playchess.com 2/12/06 Game
5min.**

1. e4 e5 2. Nf3 Nc6 3. Bc4
Nf6 4. Ng5 Bc5 5. Bxf7+ Ke7
6. Bd5 Rf8 7. c3 Bxf2+ 8.
Kxf2 Nxe4+ 9. Ke3 Nxf5 10.
Bxc6 dxc6 11. d4 Qd5 12. Qe2
Bf5 13. Kd2 Rad8 14. Ke1 Ne4
15. Nd2 Kd7 16. c4 Qxd4 17.
Nf3 Qc5 18. Bd2 Kc8 19. b4
Qe7 20. c5 Nxd2 21. Nxd2 Bd3
22. Qg4+ Kb8 23. Rd1 Rd4
24. Qg3 e4 25. Qe3 Rd5 26.
Nb3 Qf7 27. Kd2 Rf5 28. Rhe1
Rf2+ 29. Kc1 Qf6 30. Rxd3
Qb2+ 31. Kd1 Qc2# 0-1

ORTHOSCHNAPP-KAN GAMBIT

1.e4 c6 2.c4 d5 3.cxd5 cxd5
4.Qb3



**Evilone (1871)-Siroos (1886)
Playchess.com 2/18/06 5 min.**

1. c4 c6 2. e4 d5 3. cxd5
cxd5 4. Qb3 e6 5. Nc3 Nf6 6.
exd5 exd5 7. Nf3 Nc6 8. d4
Be7 9. Bd3 O-O 10. O-O Na5
11. Qc2 h6 12. Ne5 Be6 13. f4
Nc4 14. h3 Nxe5 15. fxe5 Ne4
16. Be3 Rc8 17. Rad1 Bb4 18.
Bxe4 dxe4 19. Qxe4 Bxc3 20.
bxc3 Bd5 21. Qg4 Kh8 22. Qh5
Kh7 23. Rf6 gxf6 24. Qxh6+ Kg8
25. exf6 Qxf6 26. Qxf6 Rc6
27. Qg5+ Rg6 28. Qxd5 1-0

Evilone (1945)-Tiger15 (1944)
Playchess.com 2/18/06 5 min.

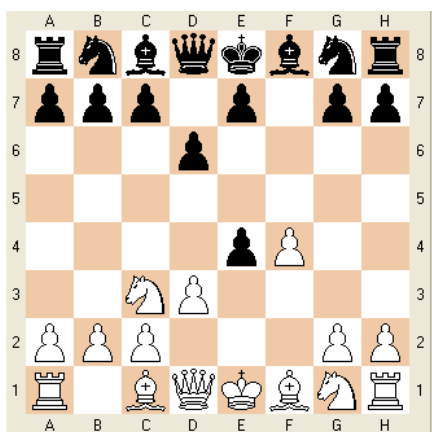
1. c4 c6 2. e4 d5 3. cxd5
 cxd5 4. Qb3 dxe4 5. Bc4 e6 6.
 d3 exd3 7. Bxd3 Nc6 8. Nf3
 Nf6 9. O-O Be7 10. Rd1 Qb6
 11. Qa4 O-O 12. a3 Bd7 13.
 Qh4 Rad8 14. Nc3 h6 15. Bxh6
 gxh6 16. Qxh6 Qc5 17. Ng5 Ne5
 18. Bh7+ Kh8 19. Nce4 Neg4
 20. Qh3 Nxe4 21. Bxe4+ 1-0

Evilone - Patzii
Playchess.com 2/6/06 5 min.

1. c4 c6 2. e4 d5 3. cxd5
 cxd5 4. Qb3 dxe4 5. Bc4 e6 6.
 d3 exd3 7. Bxd3 Nf6 8. Nf3
 Be7 9. O-O O-O 10. Rd1 Qb6
 11. Qa4 Bd7 12. Qh4 g6 13.
 Nc3 Nc6 14. Bg5 Qd8 15. Bb5
 Nh5 16. Bxc6 Bxg5 17. Nxc6
 bxc6 18. g4 Nf6 19. Rd3 Qe7
 20. Rh3 Qb4 21. Nce4 Kg7 22.
 Qh6+ Kg8 23. Nxf6+ 1-0

NEW GAMBIT (NO NAME)

1. e4 d6 2. f4 f5 3. Nc3 fxe4
 4. d3



2. Evilone (1923)-Barlok
(1962) Playchess.com 2/20/06
5min.

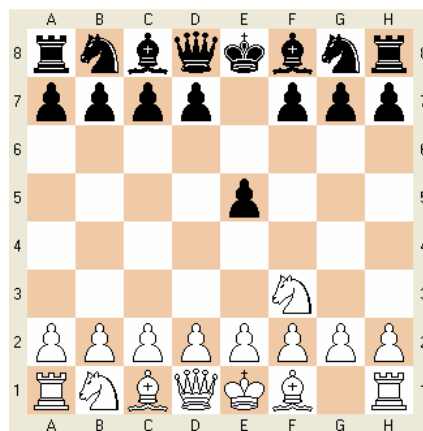
1. e4 d6 2. f4 f5 3. Nc3 fxe4

4. d3 Nf6 5. dxe4 Bg4 6. Nf3
 e6 7. h3 Bh5 8. Bc4 Qd7 9. O-
 O Nc6 10. g4 Bf7 11. Ng5 h6
 12. Nxf7 Qxf7 13. f5 Nd8 14.
 fxe6 Nxe6 15. Nd5 Qg6 16.
 Nxf6+ gxf6 17. Bxe6 Be7 18.
 Bf5 Qf7 19. e5 dxe5 20. Qd7+
 Kf8 21. Be6 Qe8 22. Qxc7 Qc6
 23. Rxf6+ {A beautiful sac
 which wins the game.} 1-0

OTHER UCO

BUSS GASS GAMBIT

1.Nf3 e5 - 3 games



Joe24 (1906)-Evilone (1963)
Playchess.com 8/20/05 5min.

1. Nf3 e5 2. c4 e4 3. Ng1 f5
 4. Nc3 Nf6 5. d3 Bc5 6. g3 O-
 O 7. Bg2 Bxf2+ 8. Kxf2 Ng4+
 9. Kf1 e3 10. Nh3 Nc6 11. Nd5
 d6 12. Nxe3 Nce5 13. Nf4 g5
 14. Nfd5 c6 15. Nc3 f4 16.
 Nxc6 Nxc6 17. Bf3 Ne5 18. g4
 Bxc6 19. Bxc6 Nxc6 20. Ne4 d5
 21. cxd5 cxd5 22. Nf2 Ne3+
 23. Bxe3 fxe3 24. Ke1 Qa5+
 25. Kf1 Rxf2+ 26. Kg1 Raf8
 27. Qc2 Qd8 28. h3 Qd6 0-1

Video (1851)-Evilone (1855)
Playchess.com 2/6/06 5min.

1. Nf3 e5 2. Nxe5 Nc6 3. d4
 d5 4. Bf4 Bd6 5. e3 Qf6 6.
 Bb5 Nge7 7. Bg3 O-O 8. Nxc6
 bxc6 9. Bd3 Bxc3 10. hxg3 h6

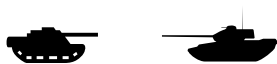
11. g4 Qg5 12. Be2 f5 13. Rh5 Qg6 14. gxf5 Bxf5 15. c3 Qxg2 16. Bf1 Qg1 17. Qa4 Bd3 18. Nd2 Qxf2+ 19. Kd1 Bxf1 20. Re5 Bd3 21. Rxe7 Qg1+ 22. Nf1 Qxf1+ 23. Kd2 Qe2+ 24. Kc1 Rf1+ 0-1

Thomas H (1872)-Evilone (1897) Playchess.com 2/6/06 Game 5min.

1. Nf3 e5 2. Nxe5 Nc6 3. Nxc6 bxc6 4. e3 d5 5. d4 Bd6 6. Be2 f5 7. Bf3 Nf6 8. c4 Be6 9. c5 Be7 10. Nc3 O-O 11. Bd2 Rb8 12. b3 Ne4 13. Bxe4 fxe4 14. Ne2 g5 15. Ng3 Qd7 16. O-O g4 17. b4 a6 18. a4 Bh4 19. Qe2 Qe7 20. Rab1 Ra8 21. b5 axb5 22. axb5 Qg5 23. b6 cxb6 24. Rxb6 Bd7 25. Rb7 Rad8 26. Ba5 Ra8 27. Bb6 Bc8 28. Rc7 Ba6 29. Qe1 Bxg3 30. hxg3 Bxf1 31. Qxf1 Rf6 32. Re7 Raf8 33. Re5 Qg6 34. Ba5 Kh8 35. Be1 Rf5 36. Re7 R5f6 37. Qe2 Qh5 38. Qd1 Rh6 39. Kf1 Qh1+ 40. Ke2 Qxg2 41. Qa4 Rh2 42. Qa7 Rxf2+ 43. Kd1 Rd2+ 44. Kc1 Rd1+ 45. Kxd1 Qc2# 0-1

CHESSE BATTLEFRONT #3

by Clyde Nakamura



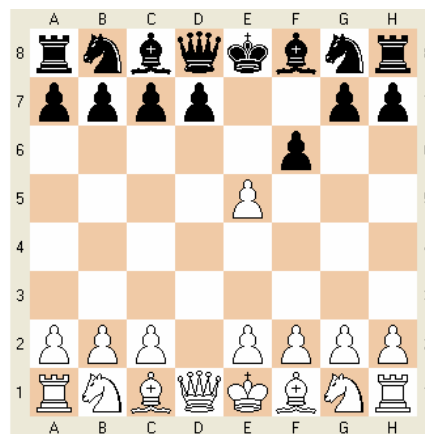
The odyssey continues. More of my recent chess games that I played on Playchess.com. This time all of the games are annotated. Please note that the ratings at Playchess.com are skewed. They are 200 points under what they should actually be. A friend, National Master Reynolds Takata is rated 2000+ on Playchess.com. There are some

IM's and masters who are rated just 2000 on Playchess.com I even played an over-the-board GM who was just rated 2000+. The Playchess.com server is based in Germany and there are a lot of strong players on the European continent. I really have to play well to win. I have placed a file called cbfront3.pgn in the files section for your viewing pleasure.

Best Regards
Clyde Nakamura

SOLLER GAMBIT

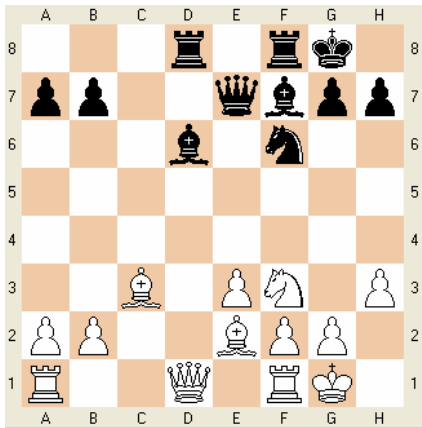
1. d4 e5 2. dxe5 f6



Hans2006 (1831)-Evilone (1868) 2/26/06 Game 5min. Soller Gambit

1. d4 e5 {The Englund Gambit.}
2. dxe5 f6 {The Soller Gambit. If 2...d6 we would have the Blackburne-Hartlaub Gambit.}
3. exf6 Nxf6 4. Nf3 d5 5. e3 Bd6 6. Be2 O-O 7. O-O c6 {to further guard my d-pawn. } 8. c4 Bg4 9. Nc3 Nbd7 10. cxd5 cxd5 11. h3 Bh5 12. Nxd5 Bf7 13. Nxf6+ Nxf6 14. Bd2 Qe7 15. Bc3 Rad8

{Following Diagram}

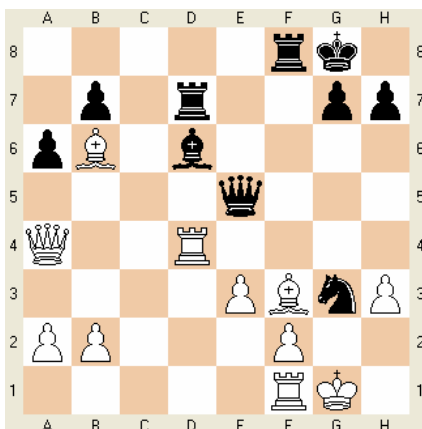


{In this position, after having played 15. . . .Ra-d8, Black is threatening Bh2+ winning the White Q. White has to move the Q off of the Q file.}

16. Qa4 Ne4 17. Bd4 a6 18. Bb6 Rd7 {Fritz8 likes the move 18...Rc8. I prefer my move since it guards my Bishop at d6.}
19. Rad1 Bh5 20. Rd4 Bxf3 21. Bxf3 Qe5 22. g3

(22. Rxe4 Qh2#) (22. Rfd1 Qh2+ 23. Kf1 Nf6 24. Qc4+ Kh8 25. Bc5 Bxc5 26. Rxd7 Nxd7 27. Rxd7 b6 {+- 4.16 and White has the edge according to Fritz8.})

22... Nxc3 {Diagram}



23. fxc3

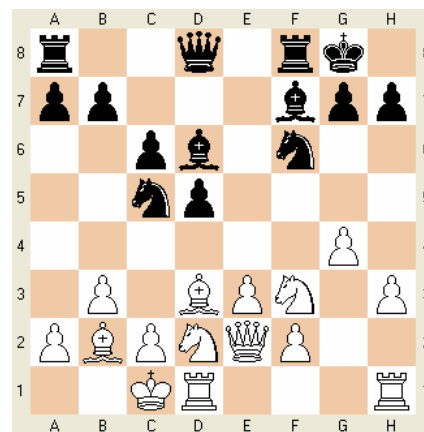
(23.Rf4 Nxf1 24. Qxd7 Nd2 25. Bxb7 Rxf4 26. exf4 Qe1+ 27. Kg2 Qf1+ 28. Kg3 Qd3+ 29. Kh4 g5+ 30. fxc3 (30. Kg4 gxf4 31. Qe6+

Kg7 32. Ba5 Nb1 33. Bd5 Qg6+ 34. Qxg6+ hxg6 35. Be4 {+- 5.09 and Black is lost}) 30... Bg3+ 31. fxc3 Qxd7)

23... Qxc3+ 24. Bg2 Qh2# 0-1

**Xerid (1831)-Evilone (1885)
2/26/06 Game 5min. Soller Gambit**

1. d4 e5 2. dxe5 f6 {The Soller Gambit} 3. exf6 Nxf6 4. Nf3 d5 5. e3 Bd6 6. Bd3 c6 7. b3 O-O 8. Bb2 Bg4 9. Nbd2 Nbd7 10. h3 Bh5 11. g4 Bf7 12. Qe2 Nc5 13. O-O-O



{This is a typical White Queen-side castled position in the Soller Gambit. I have seen this many times before.}

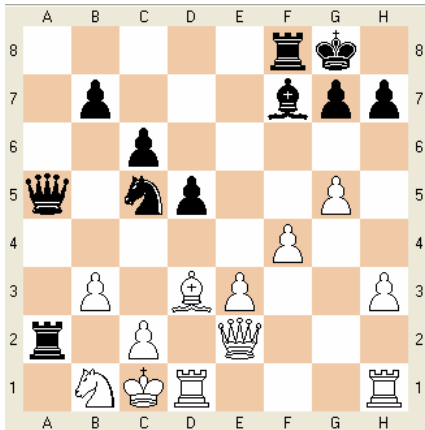
13. . . . a5

{I wanted to play a4 to open the a file so that my Rook can penetrate the White King's position and create mate threats.}

14. g5 Nfd7 15. Nd4 a4 16. Nf5 Be5

{I wanted to exchanges Bishops to weaken the White castled position.}

17. Nd4 axb3 18. axb3 Ra2 19. f4 Bxd4 20. Bxd4 Qa5 21. Bxc5 Nxc5 22. Nb1? { Next Diagram}



{22. Nb1? drops the White Queen}

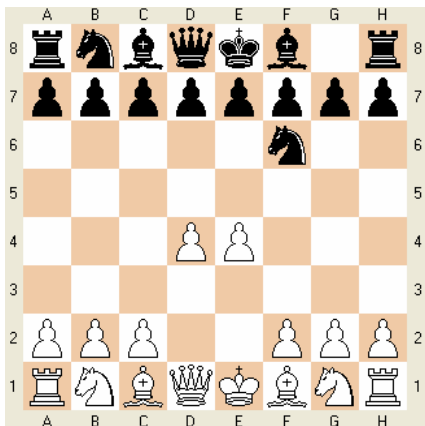
23. ...Nxb3+! 23. cxb3 Rxe2 24. Bxe2 Bg6 25. Bd3 Bxd3 26. Rxd3 Ra8 27. h4 Qa1 28. f5 Ra2 29. Rd2 Rxd2 30. Kxd2 Qb2+ 31. Kd3 Qxb3+ 32. Ke2 Qc2+ 33. Nd2 Qxf5 34. Rf1 Qg4+ 35. Kd3 Qxh4 36. Nf3 Qc4+

{another piece bites the dust.}

37. Kd2 Qxf1 0-1

OMEGA GAMBIT

1. d4 Nf6 2. e4 . . .



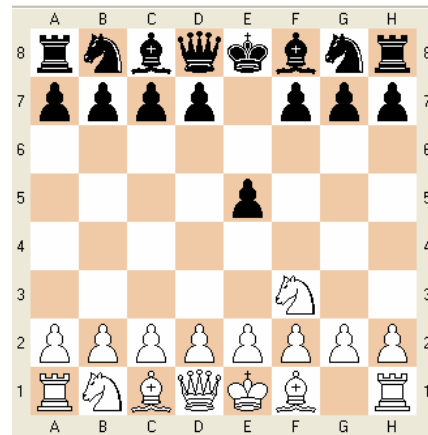
Evilone (1900)-Persil (1822)
2/26/06 5min. Omega Gambit

1. d4 Nf6 2. e4 {The Omega Gambit} Nxe4 3. Nc3 Nf6 {Black normally plays 3...Nxc3 4.bxc3.} 4. g4 e6 5. g5 Nd5 6. Nxd5 exd5 7. Bd3

Be7 8. Nf3 {further guarding the g pawn.} d6 9. Rg1 Nc6 10. c3 {I wanted to add further protection to the d pawn.} Be6 11. Be3 Qd7 12. Qd2 O-O-O 13. O-O-O Bf5 14. Kb1 {the thematic K move when you castle Queenside.} Bxd3+ 15. Qxd3 Na5 16. b3 {to prevent Blacks move Nc4.} Nc6 17. Rcl {Now that Black's attack is shut down I can attack the Black King's position on the Queenside. I first would have to open the c-file. Then double Rooks on the c-file.} Kb8 18. c4 dxc4 19. Rxc4 a6 20. d5 Ne5 21. Qd4 c5 (21... Nxc4 22. Qa7+ Kc8 23. Qa8#) 22. dxc6 Nxc6 23. Qb6 d5 24. Rxc6 Qxc6 25. Qa7+ Kc7 26. Rcl {Now the Black Queen is pinned to the King.} Qxc1+ 27. Kxc1 Rd6 {? another error which drops the R. But Black was lost anyway.} 28. Bf4 1-0

BUSS GASS GAMBIT

1. Nf3 e5



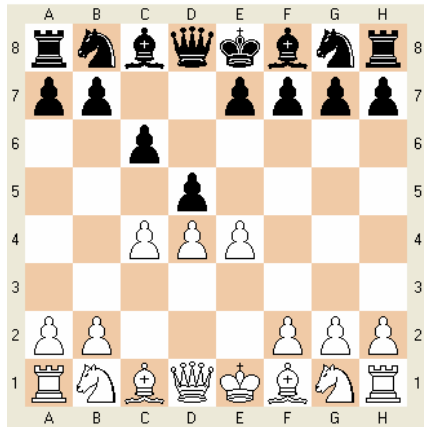
Suates06 (1850)- Evilone (1882)
2/27/06 5min. Buss Gass Gambit

1. Nf3 e5 {The Buss Gass Gambit}
2. Nxe5 Nc6 {If 3.Nxc6 I would play 3...bxc6 and head into a reverse Omega Gambit type of

pawn position with pawns at c6 & d5.} 3. Nf3 d5 4. d4 Bg4 5. c3 Bd6 6. Nbd2 Nf6 7. g3 Qd7 8. Bg2 O-O-O {I have achieved full development. My 2 Rooks are connected and I have moved my Queen off the back rank. I am ready to conduct a kingside attack.} 9. O-O Bh3 10. b4 h5 11. Ng5 Bxg2 12. Kxg2 h4 13. Ndf3 hxg3 14. fxg3 Ne4 15. Nxe4 Qh3+ 16. Kg1 dxe4 17. Rf2 (17. Ng5 Qxh2#) (17. Ne1 Qxh2#) 17... exf3 18. exf3 Rde8 {I missed the move 18...Bxg3 which would devastate Whites position.} 19. b5 Bxg3 20. Rg2 Re1+ (20... Bxh2+ 21. Kf2 Qh4+ 22. Kf1 Bg3 23. Bd2 Ne5 24. Be3 Nc4 25. Bg1 Ne3+ 26. Ke2 Nxd1+ {-+ 18.59}) 21. Qxe1 Bxe1 22. bxc6 bxc6 23. Bf4 Bxc3 24. Rc1 Bxd4+ 25. Kh1 Qxf3 26. Bg3 c5 {-+ 12.75 and White had no more play left.}0-1

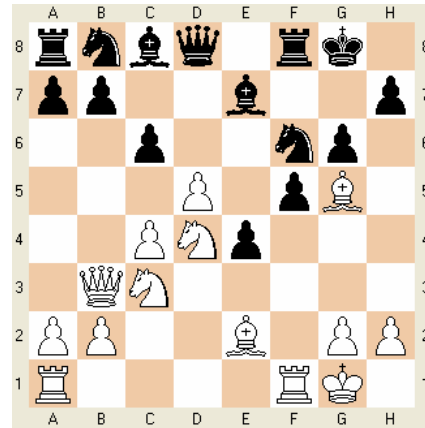
DIEMER-DUHM GAMBIT

1. e4 c6 2. d4 d5 3. c4



Evilone (1898)-Suates06 (1833)
2/27/06 5min. Diemer-Duhm Gambit

1. e4 c6 2. d4 d5 3. c4 {Diemer-Duhm Gambit (Caro-Kann Var.)} dxe4 4. Nc3 e5 5. d5 f5 6. f3 exf3 7. Nxf3 e4 8. Nd4 Nf6 9. Bg5 Be7 10. Be2 O-O 11. O-O g6 12. Qb3 {Next Diagram}



{White has achieved full development and is ready to attack. Black still has some development problems because some of his pieces are still on the back rank.}

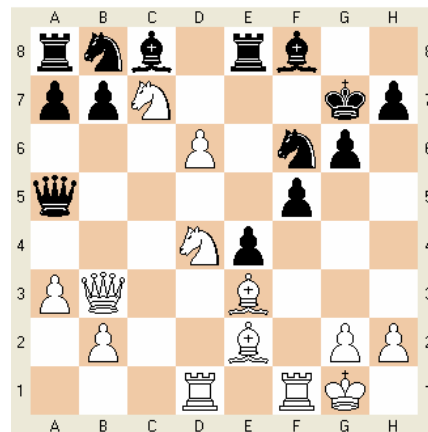
12. ... cxd5 13. cxd5 Kg7 14. Rad1

{I needed to over protect the pawn at d5.}

14. ... Qd6 15. a3 {to prevent Qb4 trading Queens.} Re8 16. Bf4 Qc5 17. Be3 Qc7

(17... Qa5 18. Kh1 Na6 19. d6 Bxd6 20. Nxf5+ gxf5 21. Rxd6 {-+ 2.00 according to Fritz8})

18. Ncb5 Qa5 19. d6 Bf8 20. Nc7



{winning a Black Rook.} Rd8 21. Nxa8 Bxd6 22. Nb5 Be7 23. Nac7 {My Knight at a8 gets back into the game} Bd7 24. Ne6+ Bxe6

25. Qxe6 Re8

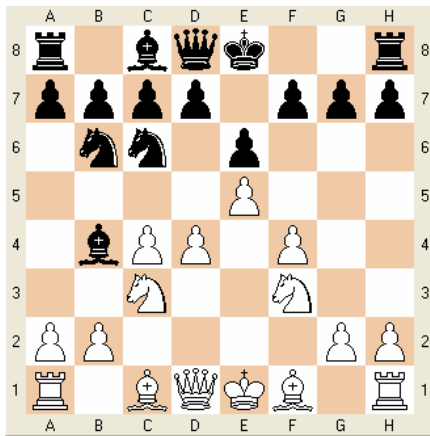
{White was threatening to capture the Bishop at e7.}
(25... Ng8 26. Bc4 Rf8 27. Bd4+ Bf6 28. Bxf6+ Rxf6 29. Qxg8+ Kh6 30. Rd6 Nc6 31. Rd7 {+- 20.78})

26. Bd4 Nc6?? {An error, Black did not see my next move.}
27. Bxf6+ 1-0

OMEGA GAMBIT DECLINED

Evilone (1894)-Maglaj (1908)
2/27/06 Game 5min. Omega Gambit Declined

1. d4 Nf6 2. e4 {The Omega Gambit. White offers a pawn at e4 for quick development.} e6 3. e5 Nd5 4. c4 Nb6 5. f4 Nc6 6. Nf3 Bb4+ 7. Nc3 {Diagram}



{The game has transposed into the Alekhines Defense Four Pawns Attack.}

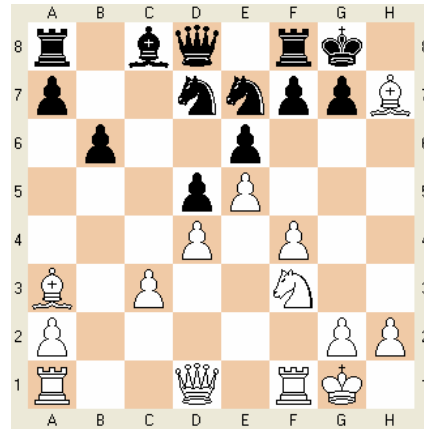
7. ... d5 8. c5

{I wanted to lock-down the middle of the board so I could swing my attack down the Black Kingside, should Black castles Kingside.}

8. ... Bxc3+ 9. bxc3 Nd7 10. Bd3 b6 11. cxb6 cxb6 12. Ba3 Ne7

{Black could not castle Kingside while my Bishop controlled the open a3-f8 diagonal.}

13. O-O O-O 14. Bxh7+ (Diagram)



{The classic Bishop sac on the h7 square.}

14. ... Kh8 15. Ng5 g6

(15... f6 16. Qh5 fxe5 17. Bg6+ Kg8 18. Qh7#)

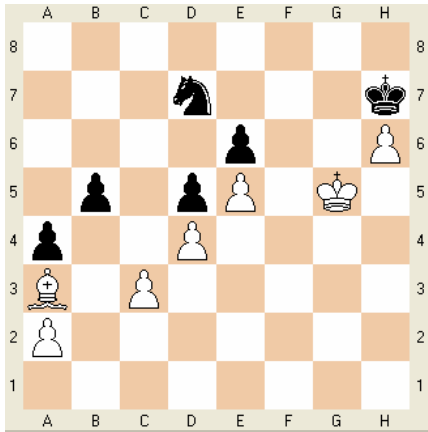
16. Qf3 Ba6 17. Qh3 Kg7 18. Bxg6 Rh8 19. Bh7 Bxf1 20. Rxf1 Nf5 21. g4 Nh6 22. Qh5 Rxe7 23. Nxe7 Kxe7 24. g5 Qh8 25. gxe6 Qg8+ 26. Kh1 Qg6 27. Qh4

(27. Qf3 Rg8 28. f5 Qxe6 29. Be7 Kh8 30. fxe6 fxe6 31. Bf6+ Kh7 32. Qd3+ Rg6 33. Rg1 Nf8 34. h4 Qh5 35. Kh2 Kh6 36. Rg3 Rxe3 37. Kxe3 Nh7 38. a3 {+/- 1.41})

27... Rg8 28. Qh3 Qxe6 29. Qxe6+ Kxe6 30. f5 Rg5 31. fxe6 fxe6 32. Rf7 Rg7 33. Rf3 a6 34. Bc1+ Kh7 35. Rh3+ Kg8 36. Bh6 Rf7

{played to prevent Black from playing either Rf1 or Rf2.}

37. Kg2 a5 38. Rg3+ Kh7 39. Bd2 Rg7 40. h4 Rxe3+ 41. Kxe3 Kg6 42. Kg4 b5 43. h5+ Kh7 44. Kg5 a4 45. Bc1 Kg7 46. h6+ Kh7 47. Ba3 { Next Diagram}



{Still a very difficult endgame.}

47. ... Nb6 48. Be7 Nc4 49. Kf6 Nd2 50. Kxe6 Nb1 51. Bb4

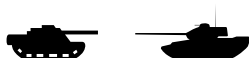
{guarding my c3 pawn. Black's pawn at d5 is short-lived.}

{Here I had to ask, "Why does Black bother to play on?" Then I remembered, this is only a 5 minute game. Black still has a chance to win on time – editor}

51. ... Nxc3 52. Bxc3 Kxh6 53. Kxd5 Kg6 54. e6 Kf5 55. e7 Kf4 56. e8=Q b4 57. Qe5+ Kf3 58. Bd2 b3 59. axb3 axb3 60. Qe3+ Kg4 61. Qxb3 ...

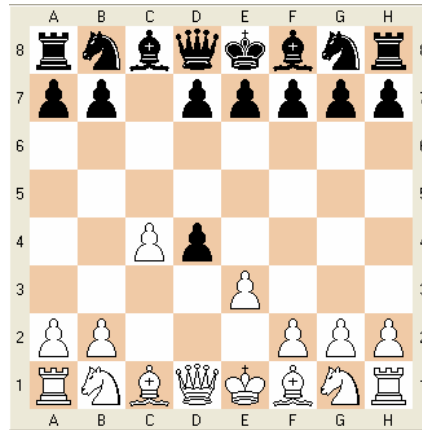
{Eliminating any chances for Black to win on time. The most Black can get is a draw because there is no mating material.}

... Kf5 62. Qf3+ Kg6 63. Qf4 Kg7 64. Qf5 Kg8 65. Qd7 Kf8 66. Bh6+ Kg8 67. Qg7#
1-0



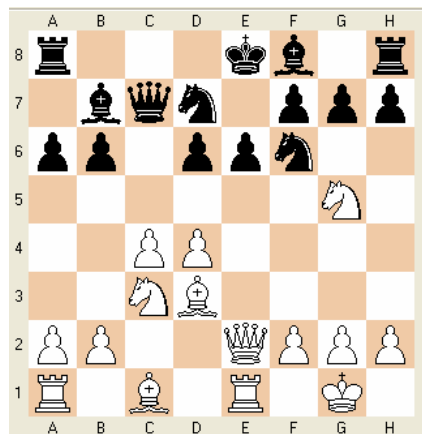
LIEDMANN GAMBIT

1. c4 c5 2. d4 cxd4 3. e3



Evilone (1897)-Bazil (1902)
2/27/06 5min. Liedmann Gambit

1. c4 c5 2. d4 cxd4 3. e3 {The Liedmann Gambit.} b6 {Black declines the second pawn offer. This Queenside fianchetto is a new line in the Liedmann Gambit.} 4. Nf3 Bb7 5. exd4 e6 6. Nc3 a6 7. Bd3 d6 8. O-O Qc7 9. Re1 {My King's Rook now pressures the weak pawns at e6 & f7. The idea of a sacrifice against these pawns is already present.} Nd7 10. Qe2 Ngf6 11. Ng5 {Diagram}



I want to sac my Knight on the f7 square. If Black castles with 11...0-0-0 then I will fork

the two Rooks with 12.Nxf7, winning the exchange.}

11. ... e5 12. f4
 {Putting more pressure on the pawn at e5. I need to blow open the Black position.}

12. ... Be7 13. fxe5 dxe5 14. dxe5 Qc5+ 15. Kh1 O-O-O {Black's King flees to safety but now he will drop some pieces.}

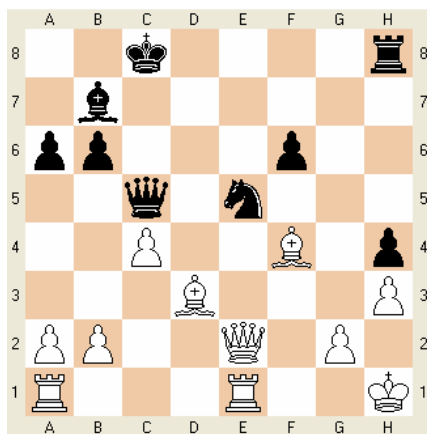
16. Nxf7 h5 17. Nxd8 Bxd8 18. exf6 Bxf6 19. Nd5

{I needed to shut off the Bishop's attack at g2. Black's hopes of counter-play now end with this offer of a pawn.}
 19. ... h4

{Black intends to play h3 to open the diagonal from b7 to g2. I had to stop this with 20.h3.}

20. h3 Ne5 21. Nxf6 gxf6 22. Bf4

{Developing my Bishop at c1 and also adding another defender to my kingside. Diagram}



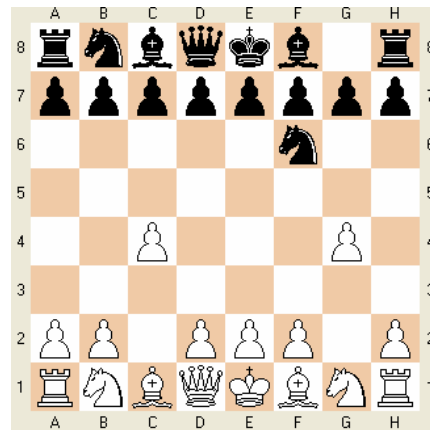
22. ... Nxd3 23. Qxd3 Qc6
 {Threatening Qxg2+ mate.}

24. Qf5+ 1-0

If 24...Kd8 25.Rd1+ Qd7 26.Qxd7#
 If 24...Qd7 25.Qxd7+ and White should win the endgame, being up a Rook.}

ENGLISH-WEIDENHAGEN GAMBIT

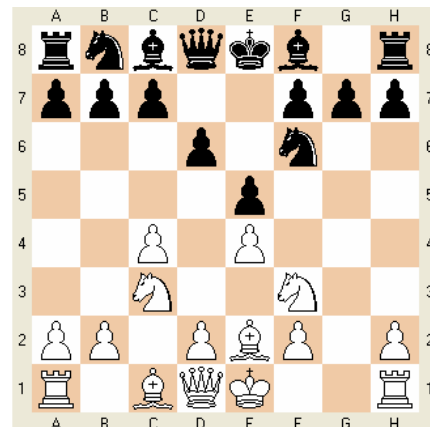
1. c4 Nf6 2. g4



Evilone (1898)-Melissos (1989)
 2/27/06 Game 5min.

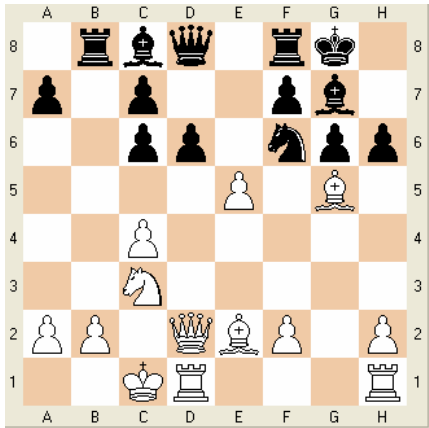
1. c4 Nf6 2. g4 {The English-Weidenhagen Gambit} Nxg4 3. e4 d6 4. Be2 Nf6 5.Nc3 e5 6. Nf3

{We have reached a position typical for this gambit. Following Diagram}



6. ... g6 7. d4 exd4 8. Nxd4 Bg7
 9. Bg5 O-O 10. Qd2 Nc6 11. Nxc6 bxc6 12. O-O-O Rb8??

{Following Diagram}



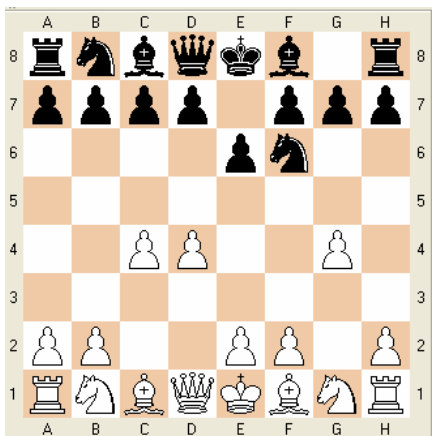
{Sad for black, in his excitement to get the Rook to target b2 he missed the deadly pawn push (13.e5). This wins at least a piece.}

13.e5 h6 (13... dxe5 14. Qxd8 Rxd8 15. Rxd8+ Bf8 16. Bxf6 {+- 13.16 Black is totally lost since my next move will be Be7 winning another piece.})

14. exf6 hxg5 15. fxg7 Re8 16. h4 gxh4 {? Another error. Now my Queen goes to h6 threatening mate.} 17. Qh6 f5 18. Rxh4 Qf6 {? This loses immediately with 19.Qh7+ g8Q double check and mate.} (18... Kf7 19. Rg1 Qf6 20. Rxc6 Qxc6 21. Bh5 Ke7 22. Bxc6 {+- mate in 10 moves according to Fritz8.}) 19. Qh7+ 1-0

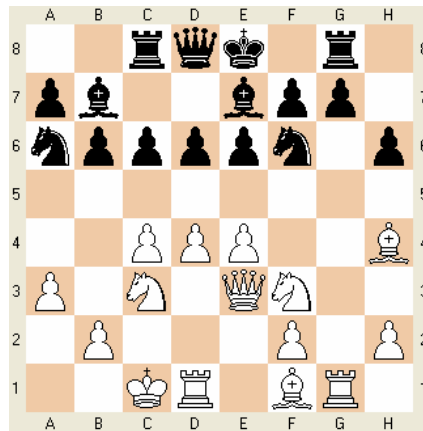
DEVIN GAMBIT

1.c4 e6 2. d4 Nf6 3. g4



Evilone (1905)-Enesco
Playchess.com 2/27/06 5 min.

1. c4 e6 2. d4 Nf6 3. g4 {The Devin Gambit} Nxg4 4. Nf3 {4.e4 right away is not good because of 4...Qh4 attacking my f2 pawn.} b6 {A different version of the Devin Gambit.} 5. Rg1 {Played to put pressure on the g7 pawn. The Black Bishop at f8 cannot move right away because the pawn at g7 drops.} Nf6 6. Nc3 Bb7 7. Bg5 Be7 8. Qd3 {Allows for the e4 pawn push and Queenside Castling.} h6 9. Bh4 Rg8 10. O-O-O d6 11. e4 Na6 12. a3 {to prevent Nb4 which will harass my Queen.} c6 13. Qe3 {Putting the Black Queen in line with the D1 Rook... e5 is now a dangerous threat.} Rc8? {Fritz8 states that this Rook-c8 move is a mistake and gives White an edge of +/- 1.38.}



14. e5 Nd7 15. Bxe7 Qxe7 16. exd6 Qxd6 17. Ne5 Nxe5 {? Fritz8 recommended 17...Rd8 here. This move gives White the open d file.} 18. dxe5 Qc5 19. Qf4 {There is no sense in trading Queens letting Black off the hook; as White has a strong attack.} Nc7 20. Ne4 Qe7 21. Nd6+ Kf8 22. Nxb7 b5 23. Nd6 Rd8 24. Bg2 {+- 4.31 another pawn will fall, so Black resigns.} 1-0

